

HDG. Steel Conduits

熱鍍鋅導線管系列



標準熱鍍鋅導線管
Standard HDG. Steel Conduits

所有 **HN-MES** 熱鍍鋅導線管選擇最好的材料，採用自動化先進技術及生產設備生產，受嚴謹的品質監控。

All **HN-MES** HDG. Steel Conduits choose the best raw materials and adopts automatic production line, with advanced technology and modern equipment under a strict quality control system.

鍍鋅線管表面噴粉處理
Steel Conduits with epoxy power coating



啞黑色 Matt Black



紅色 Red



白色 White

熱度鋅導線管

材料：鋼材

標準：BS EN / IEC 61386-21

表面處理：表面做熱浸鋅處理，內牙塗上防銹油

HDG. Steel Conduits

Material: Steel

Standard: BS EN / IEC 61386-21

Surface Finish: Hot dipped galvanized both inside and outside of the conduit, and anti-rust oil for two threaded ends

標稱尺寸 (毫米)	產品型號	參考外直 徑下限 (毫米)	參考外直 徑上限 (毫米)	管壁厚 下限 (毫米)	管壁厚 上限 (毫米)	標稱螺 紋長度 (毫米)	參考重量 (千克/米)	標準包裝 (條/札)	標稱長度 (米)
Nominal Size (mm)	Model No	Nominal Outside Diameter (mm)	Max Outside Diameter (mm)	Min. Wall Thickness (mm)	Max. Wall Thickness (mm)	Nominal Thread Length (mm)	Nominal Weight (kg/m)	Standard Packing (pieces/ bundle)	Standard Length (m)
20mm	CD001	19.7	20	1.45	1.75	14	0.704	100	3.75 OR 1.875
25mm	CD002	24.6	25	1.50	1.75	17	0.869	100	3.75 OR 1.875
32mm	CD003	31.6	32	1.60	1.75	19	1.141	100	3.75 OR 1.875
40mm	CD004	39.6	40	1.80	1.95	19.5	1.666	70	3.75
50mm	CD005	49.6	50	1.85	2.15	21	2.499	50	3.75

備註：抗氧化保護等級：第四級

特別表面處理（噴粉）顏色可按要求訂造

Remark: Class of protection against corrosion : Class 4
Special finish (epoxy power coating) with specified colour
can be offered upon request

HDG. Solid Couplers

熱鍍鋅梳杰系列



標準熱鍍鋅梳杰
Standard HDG. Solid Coupler

所有 **HN-MES** 熱鍍鋅梳杰采用先進的數控機器生產，尺寸更準確，表面更平滑。

All **HN-MES** HDG. Solid Couplers production adopts advanced NC machines, more precise dimensions and better surface finish can be obtainable.

梳杰表面噴粉處理
Solid couplers with epoxy power coating



啞黑色 Matt Black



紅色 Red



白色 White

熱鍍鋅梳杰

材料：瑪鋼或鋼材

標準：BS EN / IEC 61386-21

表面處理：熱浸鋅處理

HDG. Solid Couplers

Material: Steel or Malleable cast iron

Standard: BS EN / IEC 61386-21

Surface Finish: Hot Dipped Galvanized

尺寸 (毫米) Size (mm)	產品型號 Model No	數量 (每箱) Qty/Ctn
∅ 20	C140	1000
∅ 25	C141	500
∅ 32	C142	400
∅ 40	C143	300
∅ 50	C144	100

備註：特別表面處理（噴粉）顏色可按要求訂造

Remark: Special finish (epoxy power coating) with specified colour can be offered upon request

HDG. Distance Saddles

熱鍍鋅離牆碼系列



標準熱鍍鋅離牆碼
Standard HDG. Distance Saddle

所有 **HN-MES** 熱鍍鋅離牆碼的生產是采用最好的材料和先進的技術配合現代化的設備，并受嚴謹的品質監控。

All **HN-MES** HDG, distance saddles production chooses the best raw materials and adopts modern equipment supported by advanced technology. The whole production procedure is under a strict quality surveillance scheme.

離牆碼表面噴粉處理
Distance saddles with epoxy power coating



啞黑色 Matt Black



紅色 Red



白色 White

熱鍍鋅離牆碼

材料：瑪鋼

標準：BS EN / IEC 61386-21

表面處理：熱浸鋅處理

HDG. Distance Saddle

Material: Malleable cast iron

Standard: BS EN / IEC 61386-21

Surface Finish: Hot Dipped Galvanized

尺寸 (毫米) Size (mm)	產品型號 Model No	數量 (每箱) Qty/Ctn
Ø 20	S131	500
Ø 25	S132	300
Ø 32	S133	200
Ø 40	S134	160
Ø 50	S135	120

備註：特別表面處理（噴粉）顏色可按要求訂造
Remark: Special finish (epoxy power coating) with specified colour
can be offered upon request

Adaptable Junction Boxes

生鐵過路箱系列



標準熱鍍鋅生鐵過路箱
Standard HDG, Adaptable Junction Box

所有 **HN-MES** 生鐵過路箱的生產是采用最好的材料,先進的技術配合現代化的設備,并受嚴謹的品質監控。

All **HN-MES** HDG, adaptable junction boxes production chooses the best raw materials and adopts modern equipment supported by advanced technology. The whole production procedure is under a strict quality surveillance scheme.

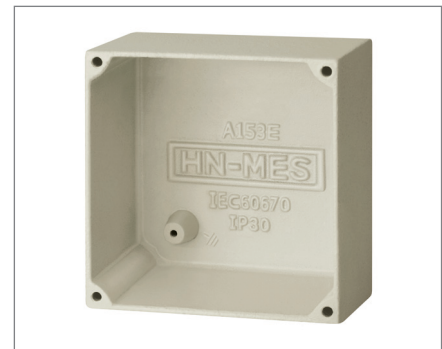
生鐵過路箱表面噴粉處理
Adaptable junction boxes with epoxy power coating



啞黑色 Matt Black



紅色 Red



白色 White

熱鍍鋅生鐵過路箱

材料：生鐵

標準：IEC 60670-1

表面處理：熱浸鋅處理

HDG. Cast Iron Adaptable Junction Box

Material: Cast Iron

Standard: IEC 60670-1

Surface Finish: Hot Dipped Galvanized

尺寸 (毫米) Size (mm)	產品型號 Model No	數量 (每箱) Qty/Ctn
75x75x50	A152E	50
75x75x75	A152SE	50
100x100x50	A153E	40
100x100x75	A153SE	20
100x100x100	A153HE	20
150x150x50	A154LE	10
150x150x75	A154E	10
150x150x100	A154HE	10
225x225x75	A155E	5
300x300x75	A156E	5

備註：特別表面處理（噴粉）顏色可按要求訂造
Remark: Special finish (epoxy power coating) with specified colour can be offered upon request

Extension Rings for Adaptable Junction Boxes

生鐵通底過路箱系列



標準熱鍍鋅生鐵通底過路箱
Standard HDG. Extension Ring for Adaptable Junction Box

所有 **HN-MES** 生鐵通底過路箱的生產是采用最好的材料和先進的技術配合現代化的設備, 并受嚴謹的品質監控。

All **HN-MES** HDG. extension rings production chooses the best raw materials and adopts modern equipment supported by advanced technology. The whole production procedure is under a strict surveillance scheme.

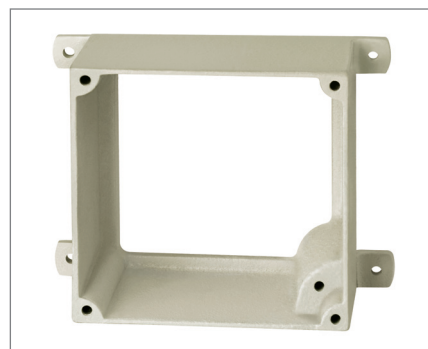
生鐵通底過路箱表面噴粉處理
 Extension rings for adaptable junction boxes with epoxy power coating



啞黑色 Matt Black



紅色 Red



白色 White

熱鍍鋅生鐵通底過路箱有水線臺

材料：生鐵

標準：IEC 60670-1

表面處理：熱浸鋅處理

HDG. Cast Iron Extension Ring for Adaptable Junction Box with Earth Terminal

Material: cast iron

Standard: IEC 60670-1

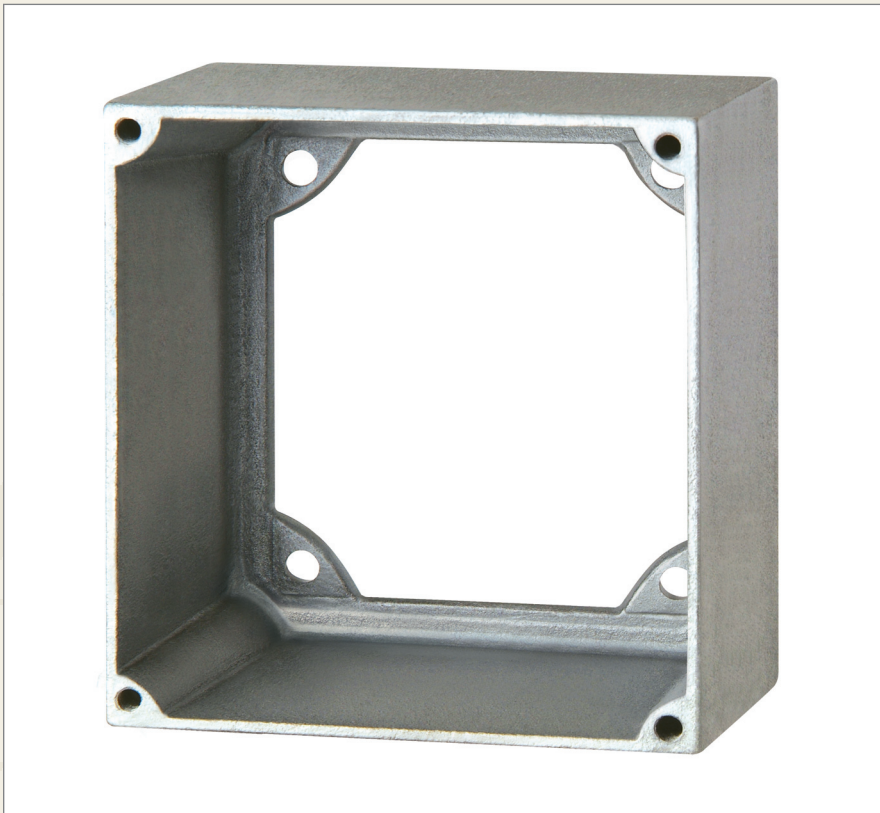
Surface Finish: Hot Dipped Galvanized

尺寸 (毫米) Size (mm)	產品型號 Model No	數量 (每箱) Qty/Ctn
75x75x50	A152BE	50
100x100x50	A153BE	40
150x150x75	A154BE	10
225x225x75	A155BE	5

備註：特別表面處理（噴粉）顏色可按要求訂造
 Remark: Special finish (epoxy power coating) with specified colour can be offered upon request

Reducing Extension Rings for Adaptable Junction Boxes

生鐵通底刁士過路箱系列



標準熱鍍鋅生鐵通底刁士過路箱
Standard HDG, Reducing Extension Rings for Adaptable Junction Box

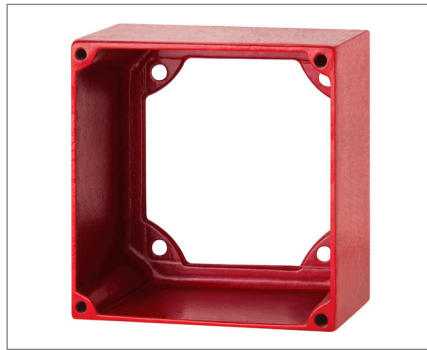
所有 **HN-MES** 生鐵通底刁士過路箱的生產是采用最好的材料和先進的技術配合現代化的設備, 并受嚴謹的品質監控。

All **HN-MES** HDG, reducing extension rings production chooses the best raw materials and adopts modern equipment supported by advanced technology. The whole production procedure is under a strict surveillance scheme.

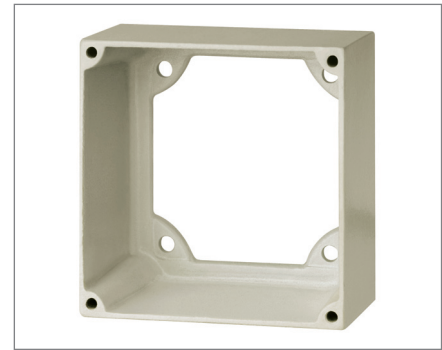
生鐵通底刁士過路箱表面噴粉處理
Reducing extension rings for adaptable junction boxes with epoxy power coating



啞黑色 Matt Black



紅色 Red



白色 White

熱鍍鋅生鐵通底刁士過路箱

材料：生鐵

標準：IEC 60670-1

表面處理：熱浸鋅處理

HDG. Reducing Extension Rings for Adaptable Junction Box

Material: Cast Iron

Standard: IEC 60670-1

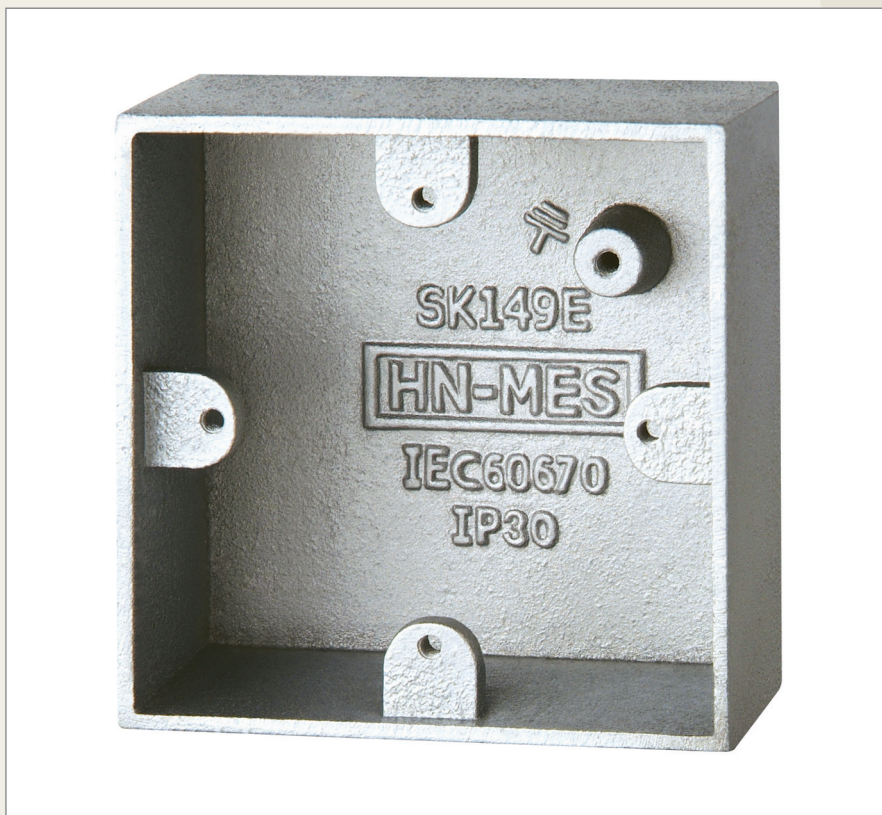
Surface Finish: Hot Dipped Galvanized

尺寸 (毫米) Size (mm)	產品型號 Model No	數量 (每箱) Qty/Ctn
100x100x50	A153R	40
150x150x75	A154R	10
225x225x75	A155R	5

備註：特別表面處理（噴粉）顏色可按要求訂造
Remark: Special finish (epoxy power coating) with specified colour can be offered upon request

Surface Switch & Socket Boxes

明燈制及插蘇箱系列

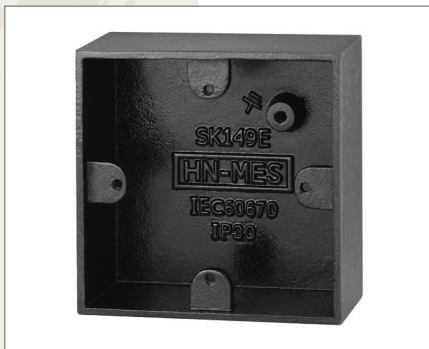


標準熱鍍鋅單位生鐵明燈制及插蘇箱
Standard One Gang HDG. Cast Iron Surface Switch & Socket Box

所有 **HN-MES**。明燈制及插蘇箱的生產是采用最好的材料和先進的技術配合現代化的設備，并受嚴謹的品質監控。

All **HN-MES**。Surface Switch & Socket box production chooses the best raw materials and adopts modern equipment supported by advanced technology. The whole production procedure is under a strict quality surveillance scheme.

單位生鐵明燈制及插蘇箱表面噴粉處理
 One gang surface switch & socket boxes with epoxy power coating



亞黑色 Matt Black



紅色 Red



白色 White

單位生鐵熱鍍鋅明燈制箱

材料：生鐵

標準：IEC 60670-1

表面處理：熱浸鋅處理

One Gang HDG Cast Iron Surface Switch & Socket Box

Material: Cast Iron

Standard: IEC 60670-1

Surface Finish: Hot Dipped Galvanized

尺寸 (毫米) Size (mm)	產品型號 Model No	數量 (每箱) Qty/Ctn
86x86x44	SK149E	50

備註：特別表面處理（噴粉）顏色可按要求訂造

Remark: Special finish (epoxy power coating) with specified colour can be offered upon request

Surface Switch & Socket Boxes

明燈制及插蘇箱系列



標準熱鍍鋅矜位生鐵明燈制及插蘇箱
Standard Two Gang HDG, Cast Iron Surface Switch & Socket Box

所有 **HN-MES** 矜位生鐵明燈制及插蘇箱的生產是采用最好的材料和先進的技術配合現代化的設備, 并受嚴謹的品質監控。

All **HN-MES** Two Gang HDG, Cast Iron Surface Switch & Socket Box production chooses the best raw materials and adopts modern equipment supported by advanced technology. The whole production procedure is under a strict quality surveillance scheme.

孖位生鐵明燈制及插蘇箱表面噴粉處理
Two gang surface switch & socket boxes with epoxy power coating



啞黑色 Matt Black



紅色 Red



白色 White

孖位生鐵熱鍍鋅明制箱

材料：生鐵

標準：IEC 60670-1

表面處理：熱浸鋅處理

Two Gang Cast Iron Surface Switch & Socket Box

Material: Cast Iron

Standard: IEC 60670-1

Surface Finish: Hot Dipped Galvanized

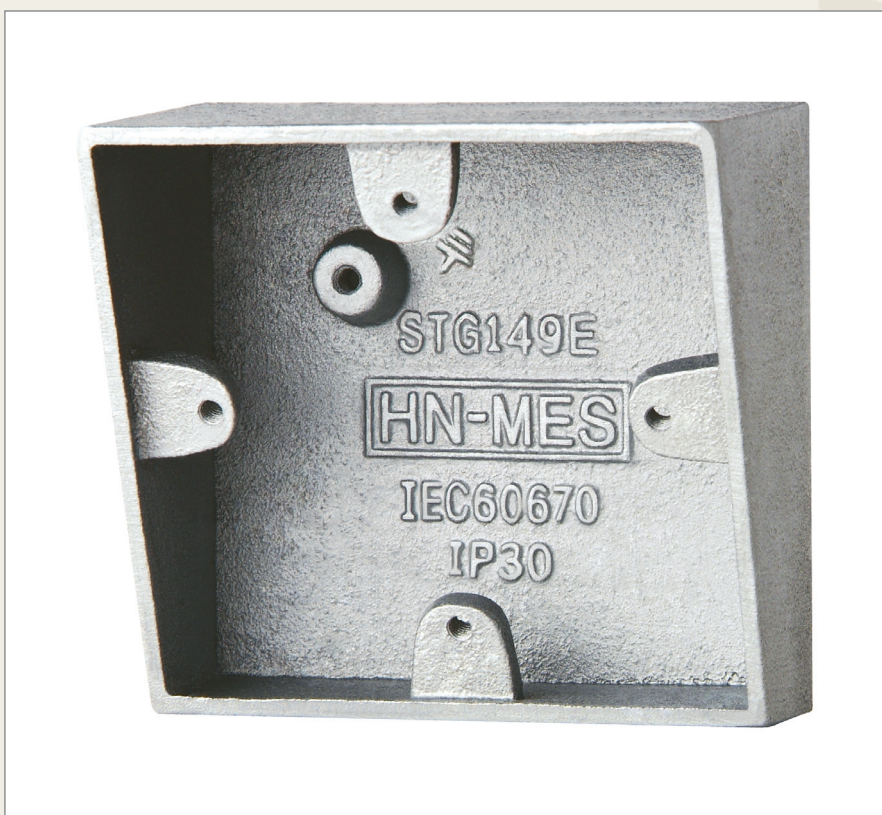
尺寸 (毫米) Size (mm)	產品型號 Model No	數量 (每箱) Qty/Ctn
146x86x44	K151E	40

備註：特別表面處理（噴粉）顏色可按要求訂造

Remark: Special finish (epoxy power coating) with specified colour can be offered upon request

Bevel Surface Switch & Socket Boxes

明燈制及插蘇斜口箱系列

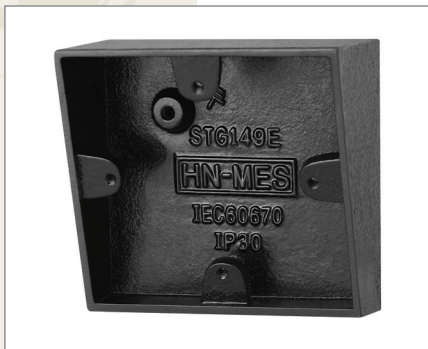


標準熱鍍鋅單位生鐵明燈制及插蘇斜口箱
Standard One Gang Cast Iron Bevel Surface Switch & Socket Box

所有 **HN-MES** 單位生鐵明燈制及插蘇斜口箱的生產是采用最好的材料和先進的技術配合現代化的設備, 并受嚴謹的品質監控。

All **HN-MES** One Gang Cast Iron Bevel Surface Switch & Socket Box production chooses the best raw materials and adopts modern equipment supported by advanced technology. The whole production procedure is under a strict quality surveillance scheme.

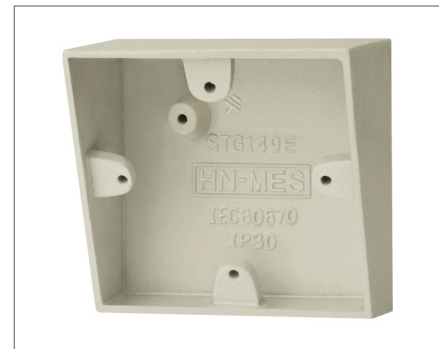
單位生鐵明燈制及插蘇斜口箱表面噴粉處理
 One gang bevel surface switch & socket boxes with epoxy power coating



亞黑色 Matt Black



紅色 Red



白色 White

單位生鐵熱鍍鋅斜口箱

材料：生鐵

標準：IEC 60670-1

表面處理：熱浸鋅處理

One Gang Cast Iron Bevel Surface Switch & Socket Box

Material: Cast Iron

Standard: IEC 60670-1

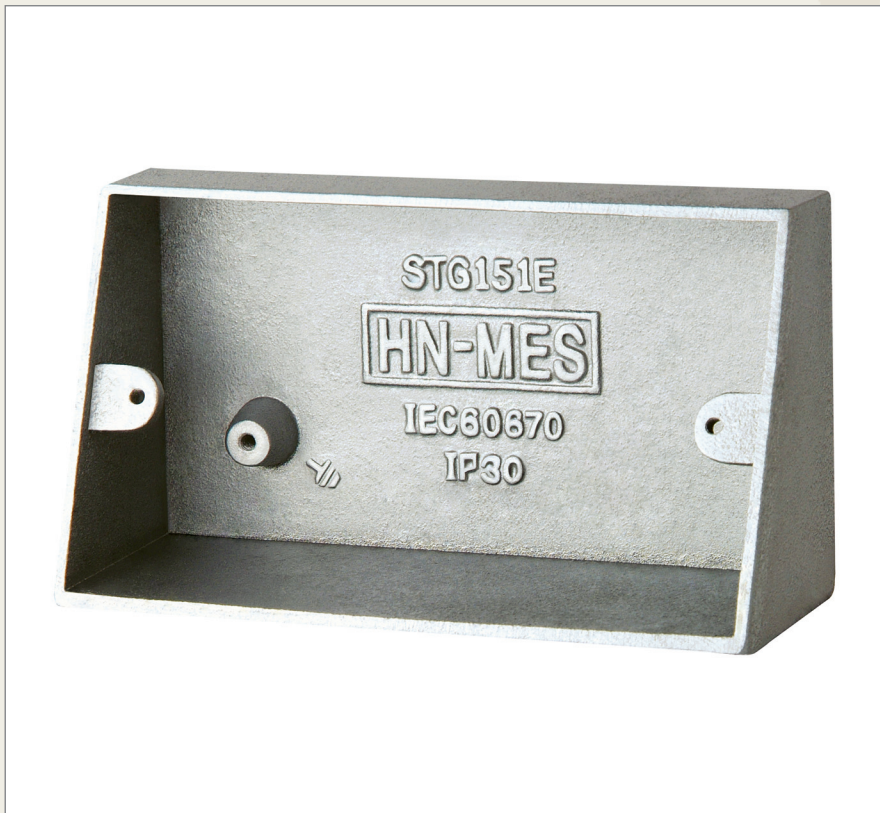
Surface Finish: Hot Dipped Galvanized

尺寸 (毫米) Size (mm)	產品型號 Model No	數量 (每箱) Qty/Ctn
86x86x56/27	STG149E	50

備註：特別表面處理（噴粉）顏色可按要求訂造
 Remark: Special finish (epoxy power coating) with specified colour
 can be offered upon request

Bevel Surface Switch & Socket Boxes

明燈制及插蘇斜口箱系列



標準熱鍍鋅孖位生鐵明燈制及插蘇斜口箱
Standard Two Gang Cast Iron Bevel Surface Switch & Socket Box

所有 **HN-MES** 孖位生鐵明燈制及插蘇斜口箱的生產是采用最好的材料和先進的技術配合現代化的設備, 並受嚴謹的品質監控。

All **HN-MES** Two Gang Cast Iron Bevel Surface Switch & Socket Box production chooses the best raw materials and adopts modern equipment supported by advanced technology. The whole production procedure is under a strict quality surveillance scheme.

孖位生鐵明燈制及插蘇斜口箱表面噴粉處理
Two gang bevel surface switch & socket boxes with epoxy power coating



啞黑色 Matt Black



紅色 Red



白色 White

孖位生鐵熱鍍鋅斜口箱

材料：生鐵

標準：IEC 60670-1

表面處理：熱浸鋅處理

Two Gang Cast Iron Bevel Surface Switch & Socket Box

Material: Cast Iron

Standard: IEC 60670-1

Surface Finish: Hot Dipped Galvanized

尺寸 (毫米) Size (mm)	產品型號 Model No	數量 (每箱) Qty/Ctn
146x86x56/27	STG151E	40

備註：特別表面處理（噴粉）顏色可按要求訂造

Remark: Special finish (epoxy power coating) with specified colour can be offered upon request

Concealed Switch & Socket Boxes

暗藏燈制及插蘇箱系列



熱鍍鋅暗藏式單位制箱有水線銅蓋

材 料：鋼材

標 準：IEC 60670-1

表面處理：熱浸鋅處理

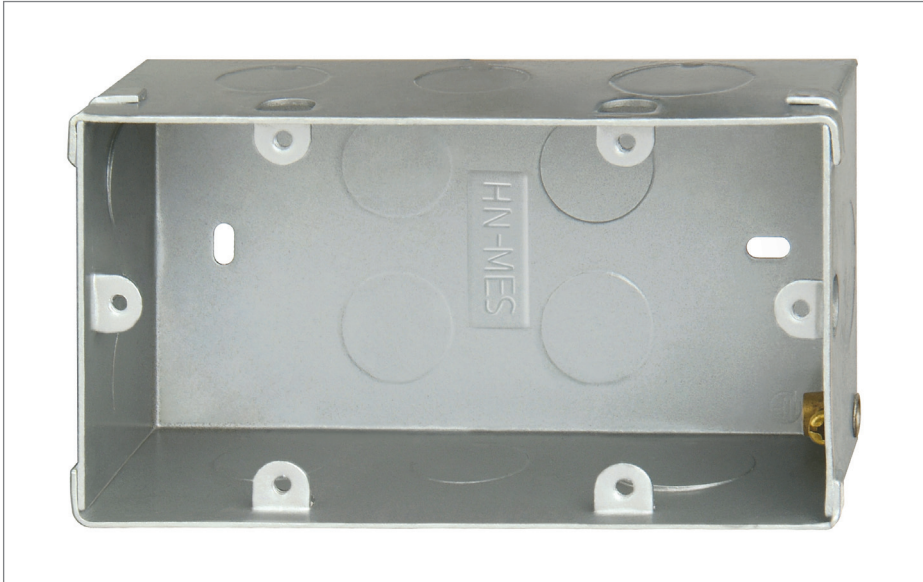
One Gang Concealed Switch & Socket Box with Earth Terminal

Material: Mild Steel Sheet

Standard: IEC 60670-1

Surface Finish: Hot Dipped Galvanized

尺寸 (毫米) Size (mm)	產品型號 Model No	數量 (每箱) Qty/Ctn
72x72x35 with only \varnothing 20mm knock	K129	200
72x72x47 with \varnothing 20 & 25mm knock	K130	200



熱鍍鋅暗藏式孖位制箱有水線銅蓋

材 料：鋼材

標 準：IEC 60670-1

表面處理：熱浸鋅處理

Two Gang Concealed Switch & Socket Box with Earth Terminal

Material: Mild Steel Sheet

Standard: IEC 60670-1

Surface Finish: Hot Dipped Galvanized

尺寸 (毫米) Size (mm)	產品型號 Model No	數量 (每箱) Qty/Ctn
133x72x35 with \varnothing 20mm knock	K128	100
133x72x47 with \varnothing 20 & 25mm knock	K131	100

Extension Rings for Concealed Switch & Socket Boxes

暗藏燈制及插蘇箱系列



暗入牆熱鍍鋅單位制箱加高圈

材 料：鋼材

標 準：IEC 60670-1

表面處理：熱浸鋅處理

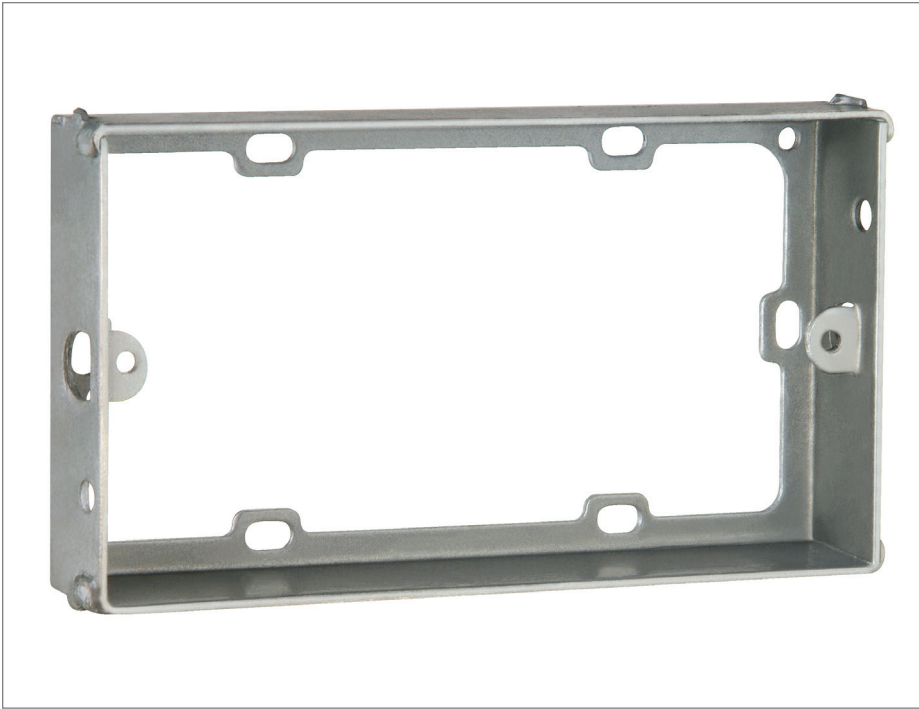
HDG. Steel Extension Rings for One Gang Switch & Socket Box

Material: Mild Steel Sheet

Standard: IEC 60670-1

Surface Finish: Hot Dipped Galvanized

尺寸 (毫米) Size (mm)	產品型號 Model No	數量 (每箱) Qty/Ctn
72x72x20	K132	200
72x72x30	K133	200
72x72x40	K134	200

**暗入牆熱鍍鋅仔位制箱加高圈**

材 料: 鋼材

標 準: IEC 60670-1

表面處理: 熱浸鋅處理

HDG. Steel Extension Rings for Two Gang Switch & Socket Box

Material: Mild Steel Sheet

Standard: IEC 60670-1

Surface Finish: Hot Dipped Galvanized

尺寸 (毫米) Size (mm)	產品型號 Model No	數量 (每箱) Qty/Ctn
133x72x20	K135	100
133x72x30	K136	100
133x72x40	K137	100

Circular Boxes

瑪鋼司令箱系列



標準熱鍍鋅瑪鋼司令箱
Standard HDG. Malleable Cast Iron Circular Box

所有 **HN-MES** 熱鍍鋅瑪鋼司令箱的生產是采用最好的材料和先進的技術配合現代化的設備，並受嚴謹的品質監控。

All **HN-MES** HDG. Malleable Cast Iron Circular Box production chooses the best raw materials and adopts modern equipment supported by advanced technology. The whole production procedure is under a strict quality surveillance scheme.

司令箱表面噴粉處理
Circular boxes with epoxy power coating



啞黑色 Matt Black



紅色 Red



白色 White

Ø 20mm 呖熱鍍鋅瑪鋼淺身司令箱

材料：瑪鋼

標準：IEC 60670-21

表面處理：熱浸鋅處理

Ø 20mm HDG. Malleable Cast Iron Standard Circular Box

Material: Malleable Cast Iron

Standard: IEC 60670-21

Surface Finish: Hot Dipped Galvanized

種類 Type	產品型號 Model No	數量 (每箱) Qty/Ctn
Terminal 單叉	L101E	100
Angle 曲叉	L102E	100
Through 直叉	L103E	100
Tee 三叉	L104E	100
Intersection 四叉	L105E	100

備註：特別表面處理（噴粉）顏色可按要求訂造

Remark: Special finish (epoxy power coating) with specified colour can be offered upon request

Circular Boxes

瑪鋼司令箱系列



Ø 25mm 阻熱鍍鋅瑪鋼中身司令箱

材 料: 瑪鋼

標 準: IEC 60670-21

表面處理: 熱浸鋅處理

Ø 25mm HDG. Malleable Cast Iron Standard Circular Box

Material: Malleable Cast Iron

Standard: IEC 60670-21

Surface Finish: Hot Dipped Galvanized

種類 Type	產品型號 Model No	數量 (每箱) Qty/Ctn
Terminal 單叉	M121E	100
Angle 曲叉	M122E	100
Through 直叉	M123E	100
Tee 三叉	M124E	100
Intersection 四叉	M125E	100



熱鍍鋅瑪鋼司令箱加高圈

材 料: 瑪鋼

標 準: IEC 60670-21

表面處理: 熱浸鋅處理

HDG. Malleable Cast Iron Extension Rings for Circular Boxes

Material: Malleable Cast Iron

Standard: IEC 60670-21

Surface Finish: Hot Dipped Galvanized

尺寸 Size	產品型號 Model No	數量 (每箱) Qty/Ctn
25mm Deep 高	L301	100
32mm Deep 高	L302	100
38mm Deep 高	L303	100

Circular Boxes

瑪鋼司令箱系列



Ø 20mm 阻熱鍍鋅瑪鋼高身司令箱

材 料：瑪鋼

標 準：IEC 60670-21

表面處理：熱浸鋅處理

Ø 20mm HDG. Malleable Cast Iron Deep Circular Box

Material: Malleable Cast Iron

Standard: IEC 60670-21

Surface Finish: Hot Dipped Galvanized

種類 Type	產品型號 Model No	數量 (每箱) Qty/Ctn
Terminal 單叉	H116E	50
Angle 曲叉	H117E	50
Through 直叉	H118E	50
Tee 三叉	H119E	50
Intersection 四叉	H120E	50



Ø 25mm 呖熱鍍鋅瑪鋼高身司令箱

材 料：瑪鋼

標 準：IEC 60670-21

表面處理：熱浸鋅處理

Ø 25mm HDG. Malleable Cast Iron Deep Circular Box

Material: Malleable Cast Iron

Standard: IEC 60670-21

Surface Finish: Hot Dipped Galvanized

種類 Type	產品型號 Model No	數量 (每箱) Qty/Ctn
Terminal 單叉	H121E	50
Angle 曲叉	H122E	50
Through 直叉	H123E	50
Tee 三叉	H124E	50
Intersection 四叉	H125E	50

Circular Boxes

瑪鋼司令箱系列



標準熱鍍鋅淺身無咀瑪鋼底孔司令箱
Standard HDG. Malleable Cast Iron Circular Loop-in Box

所有 **HN-MES**。淺身無咀瑪鋼底孔司令箱的生產是採用最好的材料和先進的技術配合現代化的設備, 并受嚴謹的品質監控。

All **HN-MES**。HDG. Malleable Cast Iron Circular Loop-in Box production chooses the best raw materials and adopts modern equipment supported by advanced technology. The whole production procedure is under a strict quality surveillance scheme.

無咀底孔司令箱表面噴粉處理
Circular Loop-in Box with epoxy power coating



啞黑色 Matt Black



紅色 Red



白色 White

淺身無咀瑪鋼底孔司令箱

材料：瑪鋼

標準：IEC 60670-21

表面處理：熱浸鋅處理

HDG. Mall. Cast Iron Circular Loop-in Box

Material: Malleable Cast Iron

Standard: IEC 60670-21

Surface Finish: Hot Dipped Galvanized

種類 Type	產品型號 Model No	數量 (每箱) Qty/Ctn
Solid 密底	L230E	100
One Hole 底單孔	L231E	100
Two Hole 底二孔	L232E	100
Three Hole 底三孔	L233E	100
Four Hole 底四孔	L234E	100

備註：特別表面處理（噴粉）顏色可按要求訂造
Remark: Special finish (epoxy power coating) with specified colour can be offered upon request

Malleable Cast Iron Dome Covers

熱鍍鋅佛蘭系列



標準熱鍍鋅瑪鋼佛蘭
Standard HDG, Malleable Cast Iron Dome Cover

所有 **HN-MES** 熱鍍鋅瑪鋼佛蘭的生產是采用最好的材料和先進的技術配合現代化的設備, 并受嚴謹的品質監控。

All **HN-MES** HDG, Malleable Cast Iron Dome Cover production chooses the best raw materials and adopts modern equipment supported by advanced technology. The whole production procedure is under a strict quality surveillance scheme.

佛蘭表面噴粉處理
Dome Cover with epoxy power coating



啞黑色 Matt Black



紅色 Red



白色 White

熱鍍鋅瑪鋼佛蘭

材料：瑪鋼

標準：IEC 60670-21

表面處理：熱浸鋅處理

HDG. Malleable Cast Iron Dome Cover

Material: Malleable Cast Iron

Standard: IEC 60670-21

Surface Finish: Hot Dipped Galvanized

尺寸 (毫米) Size (mm)	產品型號 Model No	數量 (每箱) Qty/Ctn
∅ 20mm	D146E	200
∅ 25mm	D148E	100

備註：特別表面處理（噴粉）顏色可按要求訂造

Remark: Special finish (epoxy power coating) with specified colour can be offered upon request

Malleable Cast Iron Dome Cover Base

熱鍍鋅佛蘭令蓋系列



標準熱鍍鋅瑪鋼佛蘭令蓋
Standard HDG, Malleable Cast Iron Dome Cover Base

所有 **HN-MES** 熱鍍鋅瑪鋼佛蘭令蓋的生產是采用最好的材料和先進的技術配合現代化的設備, 并受嚴謹的品質監控。

All **HN-MES** HDG, Malleable Cast Iron Dome Cover Base production chooses the best raw materials and adopts modern equipment supported by advanced technology. The whole production procedure is under a strict quality surveillance scheme.

HN-MES®

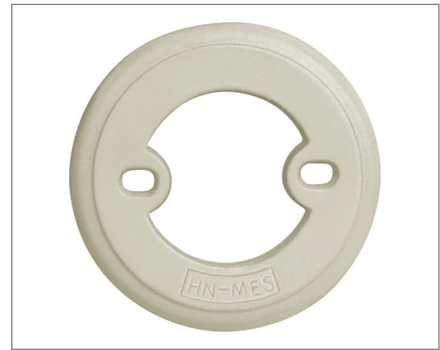
佛蘭令蓋表面噴粉處理
Dome Cover Base with epoxy power coating



啞黑色 Matt Black



紅色 Red



白色 White

熱鍍鋅佛蘭令蓋

材料：瑪鋼

標準：IEC 60670-1

表面處理：熱浸鋅處理

HDG. Mall. Cast Iron Dome Cover Base

Material: Malleable Cast Iron

Standard: IEC 60670-1

Surface Finish: Hot Dipped Galvanized

尺寸 (毫米) Size (mm)	產品型號 Model No	數量 (每箱) Qty/Ctn
∅ 20mm	D147	200

備註：特別表面處理（噴粉）顏色可按要求訂造
Remark: Special finish (epoxy power coating) with specified colour
can be offered upon request

HDG.Hexagonal Locknuts

熱鍍鋅六角迫母系列



熱鍍鋅六角薄迫母

材料：瑪鋼或鋼材

標準：IEC 61386-1

HDG. Hexagonal Locknut (Light Gauge)

Material: Steel or Malleable cast iron

Standard: IEC 61386-1

尺寸(毫米) Size (mm)	產品型號 Model No	數量(每箱) Qty/Ctn
∅ 20x3	MHL181	3000
∅ 25x3	MHL182	2000
∅ 32x3	MHL183	1500
∅ 40x3	MHL187	1000
∅ 50x3	MHL188	1000

表面處理：表面做熱浸鋅處理，內牙塗上防銹油

Surface Finish: Hot dipped galvanized outside & an anti-rusted oil coating on internal threads

**熱鍍鋅六角厚迫母**

材料：瑪鋼或鋼材

標準：IEC 61386-1

HDG. Hexagonal Locknut (Heavy Gauge)

Material: Steel or Malleable cast iron

Standard: IEC 61386-1

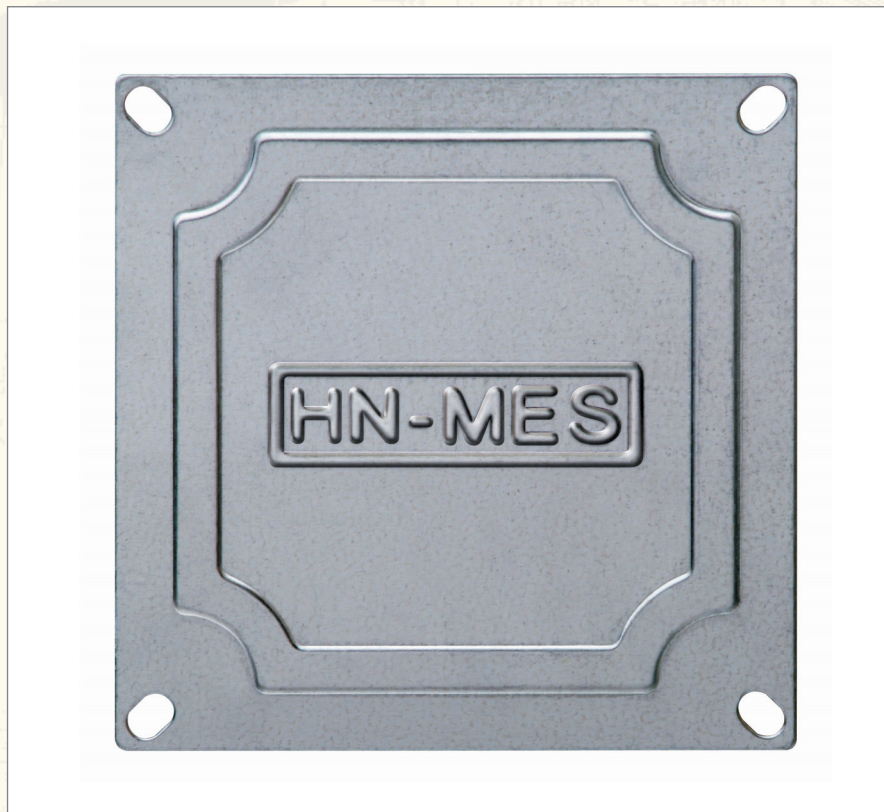
尺寸(毫米) Size (mm)	產品型號 Model No	數量 (每箱) Qty/Ctn
∅ 20x6	MHL184	2000
∅ 25x6	MHL185	1500
∅ 32x6	MHL186	1000

表面處理：表面做熱浸鋅處理，內牙塗上防銹油

Surface Finish: Hot dipped galvanized outside & an anti-rusted oil coating on internal threads

Adaptable Junction Boxes Covers

過路箱蓋系列



標準過路箱鍍鋅鐵明蓋
Galvanized Steel Surface Cover for Adaptable Junction Box

所有 **HN-MES** 過路箱鍍鋅鐵明蓋的生產是採用最好的材料和先進的技術配合現代化的設備，並受嚴謹的品質監控。

All **HN-MES** Galvanized Steel Surface Cover for Adaptable Junction Box production chooses the best raw materials and adopts modern equipment supported by advanced technology. The whole production procedure is under a strict quality surveillance scheme.

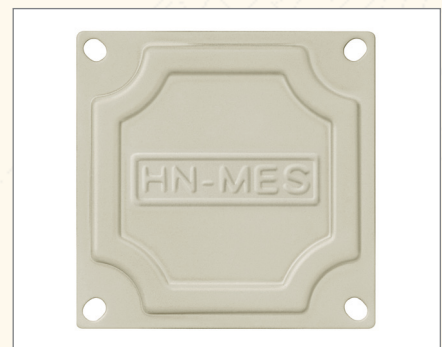
過路箱鍍鋅鐵明蓋表面噴粉處理
Galvanized Steel Surface Cover with epoxy powder coating



啞黑色 Matt Black



紅色 Red



白色 White

過路箱鍍鋅鐵明蓋

材料：鍍鋅鐵片

標準：IEC 60670-1

表面處理：電鍍鋅處理

Galv. Steel Surface Cover for Adapt. Junction Box

Material: Galvanized Steel Sheet

Standard: IEC 60670-1

Surface Finish: Pre-Galvanized

尺寸 (毫米) Size (mm)	產品型號 Model No	數量 (每箱) Qty/Ctn
75 x 75 x 1 (Thick) 厚	C152A	300
100 x 100 x 1 (Thick) 厚	C153A	200
75 x 75 x 1.2 (Thick) 厚	C152	300
100 x 100 x 1.2 (Thick) 厚	C153	200
150 x 150 x 1.2 (Thick) 厚	C154	100
225 x 225 x 1.2 (Thick) 厚	C155	40
300 x 300 x 1.2 (Thick) 厚	C156	40

過路箱熱鍍鋅鐵明蓋

材料：鋼材

標準：IEC 60670-1

表面處理：熱浸鋅處理

HDG. Steel Surface Cover for Adaptable Junction Box

Material: Mild Steel Sheet

Standard: IEC 60670-1

Surface Finish: Hot Dipped Galvanized

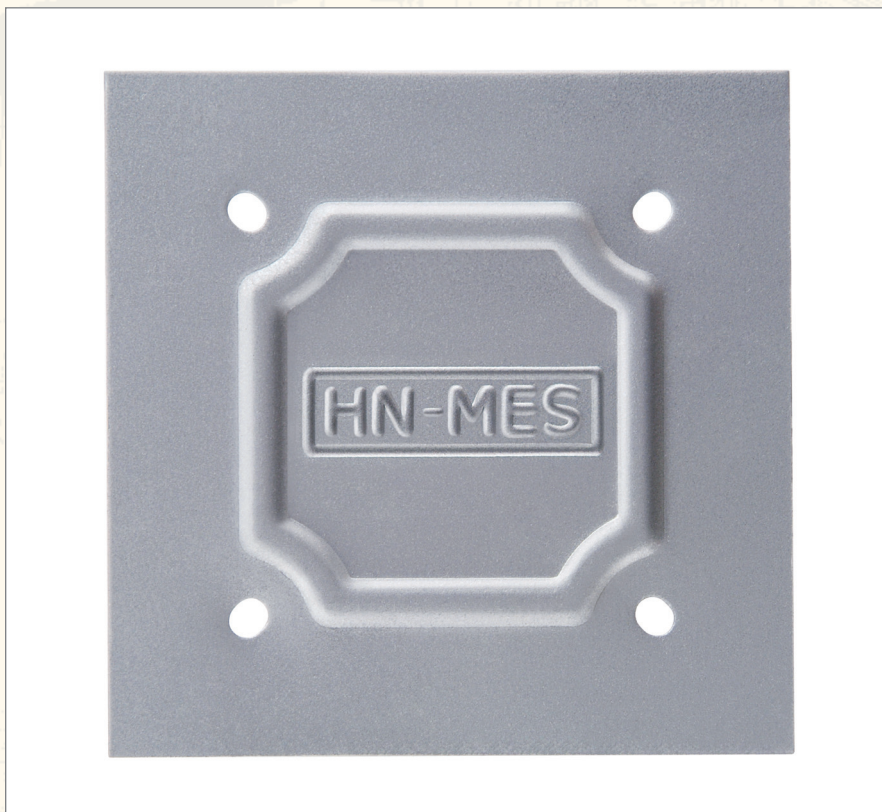
尺寸 (毫米) Size (mm)	產品型號 Model No	數量 (每箱) Qty/Ctn
75 x 75 x 1 (Thick) 厚	E152A	300
100 x 100 x 1 (Thick) 厚	E153A	200
75 x 75 x 1.2 (Thick) 厚	E152	300
100 x 100 x 1.2 (Thick) 厚	E153	200
150 x 150 x 1.2 (Thick) 厚	E154	100
225 x 225 x 1.2 (Thick) 厚	E155	40
300 x 300 x 1.2 (Thick) 厚	E156	40
150 x 150 x 1.5 (Thick) 厚	E154B	100
225 x 225 x 1.5 (Thick) 厚	E155B	40
300 x 300 x 1.5 (Thick) 厚	E156B	40

備註：特別表面處理（噴粉）顏色可按要求訂造

Remark: Special finish (epoxy coating) with specified colour can be offered upon request

Adaptable Junction Boxes Covers

過路箱蓋系列



所有 **HN-MES** 過路箱鍍鋅鐵暗蓋的生產是采用最好的材料和先進的技術配合現代化的設備，并受嚴謹的品質監控。

All **HN-MES** Galvanized Steel Flush-mounted Cover for Adaptable Junction Box production chooses the best raw materials and adopts modern equipment supported by advanced technology. The whole production procedure is under a strict quality surveillance scheme.

標準過路箱鍍鋅鐵暗蓋
Galvanized Steel Flush-mounted Cover for Adaptable Junction Box

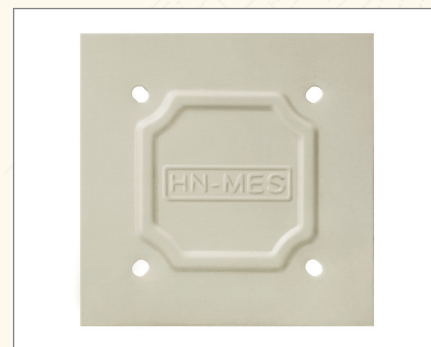
過路箱鍍鋅鐵暗蓋表面噴粉處理
Galvanized Steel Flush-mounted Cover with epoxy powder coating



啞黑色 Matt Black



紅色 Red



白色 White

過路箱鍍鋅鐵暗蓋

材料：鍍鋅鐵片

標準：IEC 60670-1

表面處理：電鍍鋅處理

Galv. Steel Flush-mounted Cover for Adapt. Junction Box

Material: Galvanized Steel Sheet

Standard: IEC 60670-1

Surface Finish: Pre-Galvanized

尺寸 (毫米) Size (mm)	產品型號 Model No	數量 (每箱) Qty/Ctn
75 x 75 x 1 (Thick) 厚	D152A	300
100 x 100 x 1 (Thick) 厚	D153A	200
75 x 75 x 1.2 (Thick) 厚	D152	300
100 x 100 x 1.2 (Thick) 厚	D153	200
150 x 150 x 1.2 (Thick) 厚	D154	100
225 x 225 x 1.2 (Thick) 厚	D155	40
300 x 300 x 1.2 (Thick) 厚	D156	40

過路箱熱鍍鋅鐵暗蓋

材 料：鋼材

標 準：IEC 60670-1

表面處理：熱浸鋅處理

HDG. Steel Flush-mounted Cover for Adaptable Junction Box

Material: Mild Steel Sheet

Standard: IEC 60670-1

Surface Finish: Hot Dipped Galvanized

尺寸 (毫米) Size (mm)	產品型號 Model No	數量 (每箱) Qty/Ctn
75 x 75 x 1.2 (Thick) 厚	F152	300
100 x 100 x 1.2 (Thick) 厚	F153	200
150 x 150 x 1.5 (Thick) 厚	F154	100
225 x 225 x 1.5 (Thick) 厚	F155	40
300 x 300 x 1.5 (Thick) 厚	F156	40

備註：特別表面處理（噴粉）顏色可按要求訂造

Remark: Special finish (epoxy coating) with specified colour can be offered upon request

Circular Boxes Covers

司令箱蓋系列



標準司令箱鐵明蓋
Galvanized Steel Cover for Circular Boxes

所有 **HN-MES** 司令箱鍍鋅鐵蓋的生產是采用最好的材料和先進的技術配合現代化的設備, 并受嚴謹的品質監控。

All **HN-MES** Galvanized Steel Cover for Circular Box production chooses the best raw materials and adopts modern equipment supported by advanced technology. The whole production procedure is under a strict quality surveillance scheme.

司令箱鍍鋅鐵蓋表面噴粉處理
Galvanized Steel Cover with epoxy power coating



啞黑色 Matt Black



紅色 Red



白色 White

1mm 厚鍍鋅圓形司令箱蓋

材料：鍍鋅鐵片

標準：IEC 60670-1

表面處理：電鍍鋅處理

1mm Thick Galvanized Steel Cover for Circular Box

Material: Galvanized Steel Sheet

Standard: IEC 60670-1

Surface Finish: Pre-Galvanized

尺寸 (毫米) Size (mm)	產品型號 Model No	數量 (每箱) Qty/Ctn
65mm (明蓋) (Surface)	F157	500
86mm (暗蓋) (Flush-mounted)	F161	500

1.2mm 厚熱鍍鋅圓形司令箱蓋

材 料：鋼材

標 準：IEC 60670-1

表面處理：熱浸鋅處理

1.2mm Thick HDG. Steel Cover for Circular Box

Material: Steel

Standard: IEC 60670-1

Surface Finish: Hot Dipped Galvanized

尺寸 (毫米) Size (mm)	產品型號 Model No	數量 (每箱) Qty/Ctn
65mm (明蓋) (Surface)	F159	500
86mm (暗蓋) (Flush-mounted)	F163	500

備註：特別表面處理（噴粉）顏色可按要求訂造

Remart: Special finish (epoxy coating) with specified colour can be offered upon request

Circular Boxes Cover

司令箱蓋系列



標準司令箱鐵蓋有20mm孔
Galvanized Steel Cover with 20mm hole for Circular Boxes

所有 **HN-MES** 司令箱鍍鋅鐵蓋有20mm孔的生產是采用最好的材料和先進的技術配合現代化的設備, 并受嚴謹的品質監控。

All **HN-MES** Galvanized Steel Cover with 20mm hole for Circular Box production chooses the best raw materials and adopts modern equipment supported by advanced technology. The whole production procedure is under a strict quality surveillance scheme.

司令箱鍍鋅鐵明蓋有20mm孔表面噴粉處理
Galvanized Steel Cover with epoxy powder coating



啞黑色 Matt Black



紅色 Red



白色 White

1mm 厚鍍鋅圓形司令箱蓋有 \varnothing 20mm 孔

材料：鍍鋅鐵片

標準：IEC 60670-1

表面處理：電鍍鋅處理

1mm Thick Galvanized Steel Cover for Circular Box with \varnothing 20mm hole

Material: Galvanized Steel Sheet

Standard: IEC 60670-1

Surface Finish: Pre-Galvanized

尺寸 (毫米) Size (mm)	產品型號 Model No	數量 (每箱) Qty/Ctn
65mm (明蓋) (Surface)	F158	500
86mm (暗蓋) (Flush-mounted)	F162	500

1.2mm 厚熱鍍鋅圓形司令箱蓋有 \varnothing 20mm 孔

材 料：鋼材

標 準：IEC 60670-1

表面處理：熱浸鋅處理

1.2mm Thick HDG. Steel Cover for Circular Box with \varnothing 20mm hole

Material: Steel

Standard: IEC 60670-1

Surface Finish: Hot Dipped Galvanized

尺寸 (毫米) Size (mm)	產品型號 Model No	數量 (每箱) Qty/Ctn
65mm (明蓋) (Surface)	F160	500
86mm (暗蓋) (Flush-mounted)	F164	500

備註：特別表面處理（噴粉）顏色可按要求訂造

Remart: Special finish (epoxy coating) with specified colour can be offered upon request

Switch & Socket-outlet Boxes Covers

燈制及插蘇箱蓋系列



所有 **HN-MES** 燈制及插蘇箱蓋的生產是採用最好的材料和先進的技術配合現代化的設備, 並受嚴謹的品質監控。

All **HN-MES** Galvanized Steel Cover for Switch & Socket-outlet Box production chooses the best raw materials and adopts modern equipment supported by advanced technology. The whole production procedure is under a strict quality surveillance scheme.

標準燈制及插蘇箱明蓋
Galvanized Steel Surface Cover for Switch & Socket-outlet Box

燈制及插蘇箱明蓋表面噴粉處理
Galvanized Steel Cover with epoxy power coating



啞黑色 Matt Black



紅色 Red



白色 White

鍍鋅鐵單位制箱鐵蓋

材料：鍍鋅鐵片

標準：IEC 60670-1

表面處理：電鍍鋅處理

Galvanised Steel Cover for One Gang Switch & Socket Box

Material: Galvanized Steel Sheet

Standard: IEC 60670-1

Surface Finish: Pre-Galvanized

尺寸 (毫米) Size (mm)	產品型號 Model No	數量 (每箱) Qty/Ctn
72x72x1 (surface) 明蓋	F165	500
72x72x1 Over Sized 大邊 (Flush-mounted) 暗蓋	F166	200

熱鍍鋅鐵單位制箱鐵蓋

材 料：鐵片

標 準：IEC 60670-1

表面處理：熱浸鋅處理

HDG. Steel Cover for One Gang Switch & Socket

Material: Steel Sheet

Standard: IEC 60670-1

Surface Finish: Hot Dipped Galvanized

尺寸 (毫米) Size (mm)	產品型號 Model No	數量 (每箱) Qty/Ctn
72x72x1 (surface) 明蓋	F167	500
72x72x1 Oversided 大邊 (Flush-mounted) 暗蓋	F168	200

備註：特別表面處理（噴粉）顏色可按要求訂造

Remart: Special finish (epoxy coating) with specified colour can be offered upon request

Brass Product

銅產品系列



短銅杯臣

材 料: 銅材

標 準: BS EN / IEC 61386-21

表面處理: 金屬原材

Light Brass Male Bush

Material: Brass

Standard: BS EN / IEC 61386-21

Surface Finish: Original metal texture

尺寸 Size	產品型號 Model No	數量 (每箱) Qty/Ctn
∅ 20	B166	2000
∅ 25	B167	1000
∅ 32	B168	1000
∅ 40	B172	300
∅ 50	B174	200



長銅杯臣

材 料: 銅材

標 準: BS EN / IEC 61386-21

表面處理: 金屬原材

Heavy Brass Male Bush

Material: Brass

Standard: BS EN / IEC 61386-21

Surface Finish: Original metal texture

尺寸 Size	產品型號 Model No	數量 (每箱) Qty/Ctn
∅ 20	B169	2000
∅ 25	B170	1000
∅ 32	B171	500
∅ 40	B175	300
∅ 50	B177	200